

BRC_No 00696

Strain name hk14-ET3 (human cytokerin14 promoter + mouse endothelin 3 cDNA) B6

Primer			
	primer_name	primer_seq	length
1	hk14s2	CCCTGTGAATCACGCCTGGCGGGA	24
2	hk14as1	CTCGGGTAAATTGCAAAGGGATGC	24
3	IL-2	CTAGGCCACAGAATTGAAAGATCT	24
4	IL-2	GTAGGTGGAAATTCTAGCATCATCC	25

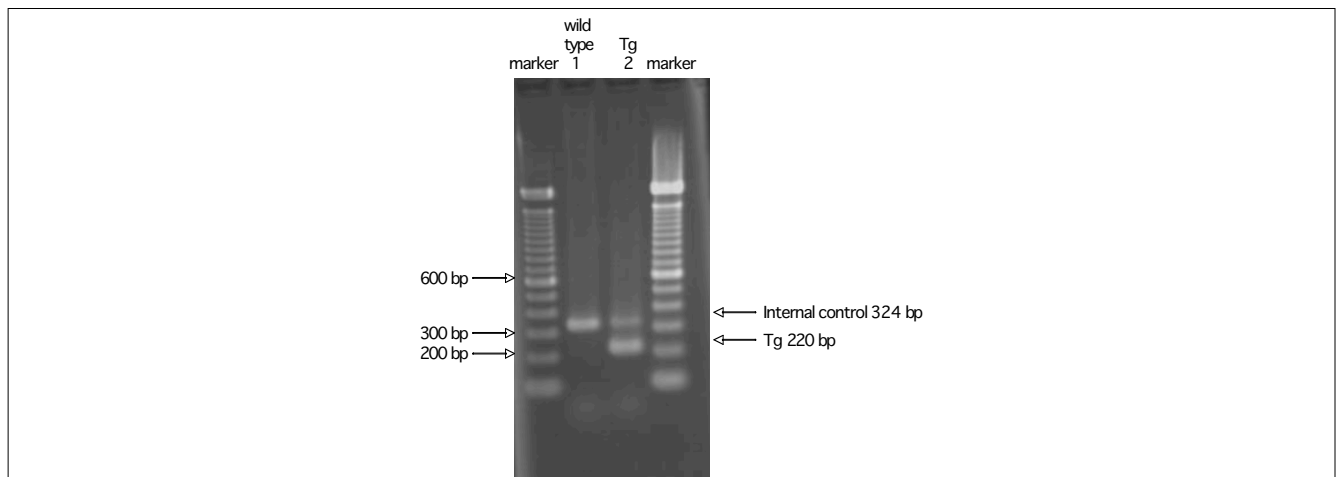
Reaction Components

Enzyme Roche Taq (Cat. No. BM1418432)

Reaction Conditions

	Conc	Run 1	Run 2	Run 3
H2O		14.3		
PCR buffer	10 X	2.5		
dNTP	2.5 mM	2.0		
primer 1	10 pmol/ μ l	0.5		
primer 2	10 pmol/ μ l	0.5		
primer 3	10 pmol/ μ l	2.0		
primer 4	10 pmol/ μ l	2.0		
DNA		1.0		
Taq		0.2		
total		25		

step	temp (°C)	time (sec)	note
1	94	180	
2	94	30*	
3	55	30*	
4	72	60*	*Repeat for 30 cycles
5	72	300	



Marker

100 bp ladder (Invitrogen, Cat. 15628-050)

Gel

2% agarose in 1 X TAE (100 V, 30 min)

PCR products

primer_set	product_size	product
primer 1 primer 2	220 bp	Tg
primer 3 primer 4	324 bp	internal control (IL-2)

Comment