

# PCR protocol

RBRC 01478

Strain name PTP rho KO 233

Primer	primer_name	primer_seq	length
1	Rho2	AgggAAAgATgACCCTTggTAAgc	24
2	Neo1	CTCTATggCTTCTgAggCggAAAg	24
3	Rho4	TTCTgAggAgAgAATgggCCTCTg	24

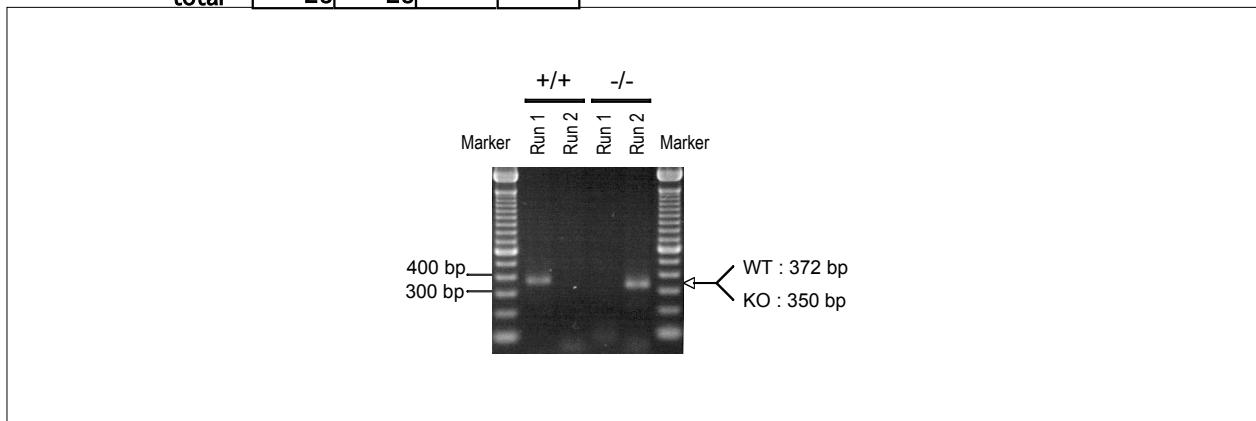
## Reaction Components

Enzyme Roche Taq (Cat. No. BM1418432)

## Reaction Conditions

step	temp (°C)	time (sec)	note
1	94	180	
2	94	30*	
3	60	30*	
4	72	60*	*Repeat for 35 cycles
5	72	300	

Conc	Run 1	Run 2	Run 3	Run 4
H2O	17.3	17.3		
PCR buffer	2.5	2.5		
dNTP	2.0	2.0		
primer 1	1.0	1.0		
primer 2	0	1.0		
primer 3	1.0	0		
DNA	1.0	1.0		
Taq	0.2	0.2		
total	25	25		



**Marker**  
100 bp ladder (Invitrogen, Cat. 15628-050)

**Gel**  
2% agarose in 1 X TAE (100 V, 35 min)

PCR products		product_size	product
primer_set	primer_set	product_size	product
primer 1	primer 3	372 bp	wild
primer 1	primer 2	350 bp	KO

Comment