

# PCR protocol

RBRC 02302

Strain name B6.129P2-Lyzs&lt;tm1(cre)lfo&gt;

Primer	primer_name	primer_seq	length
1	Lyzs_pro	gcattgcagactagctaaaggcag	24
2	Lyzs_ex1_r	GTCGCCAGGCTGACTCCATAG	22
3	Cre8	CCCAGAAATGCCAGATTACG	20

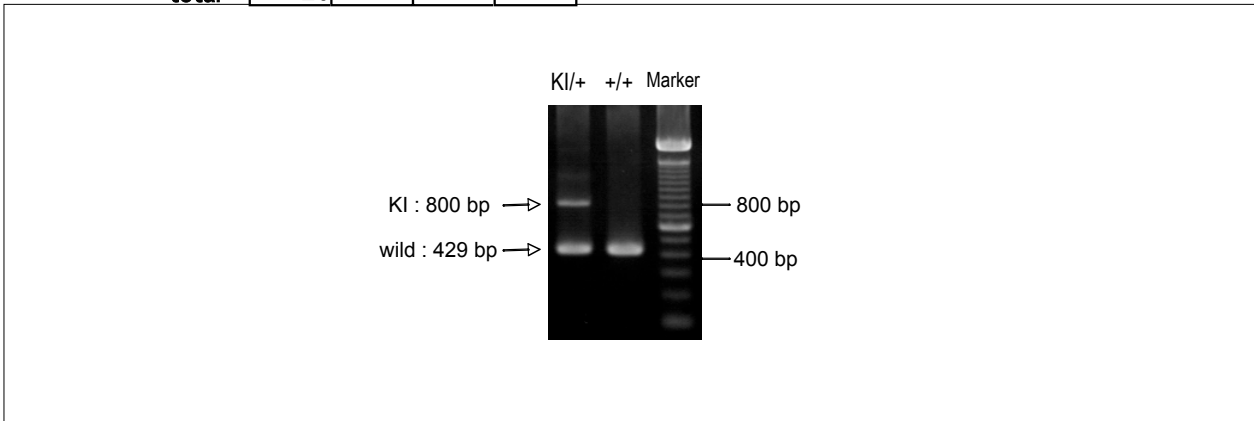
**Reaction Components**

Enzyme	TaKaRa LA Taq with GC buffer (Cat. No. RR02AG)
--------	--

**Reaction Conditions**

step	temp (°C)	time (sec)	note
1	94	180	
2	94	30*	
3	60	30*	
4	72	60*	*Repeat for 30 cycles
5	72	300	

	Conc	Run 1	Run 2	Run 3	Run 4
H2O		1.8			
PCR buffer	2 X GC I	10.0			
dNTP	2.5 mM	2.0			
primer 1	10 pmol/µl	2.0			
primer 2	10 pmol/µl	1.0			
primer 3	10 pmol/µl	2.0			
DNA		1.0			
Taq		0.2			
total		20			


**Marker**

100 bp ladder (Invitrogen, Cat. 15628-050)

**Gel**

2% agarose in 1 X TAE (100 V, 30 min)

**PCR products**

primer_set	product_size	product
primer 1 primer 2	429 bp	wild
primer 1 primer 3	800 bp	KI

**Comment**