

RBRC 03743 Strain name B6D2-Tg(CAG/Su9-DsRed2,Acr3-EGFP)RBGS002Osb

| Primer | primer_name | primer_seq | length | |
|--------|-------------|---------------------------|--------|-------------------------|
| 1 | | GCTCTAGAGCCTCTGCTAACC | 21 | |
| 2 | DsRed2-R | TGCTCCACGATGGTGTAGTCC | 21 | |
| 3 | acro | GTGGAGCTTTGTGAGGTCACAG | 22 | |
| 4 | | CTTTGCTCAGGGCGGACTGGGT | 22 | RIKEN BRC |
| 5 | oIMR0042 | CTAGGCCACAGAATTGAAAGATCT | 24 | JAX Genotyping Protocol |
| 6 | oIMR0043 | GTAGGTGGAAATTCTAGCATCATCC | 25 | JAX Genotyping Protocol |
| | | | | |
| | | | | |
| | | | | |

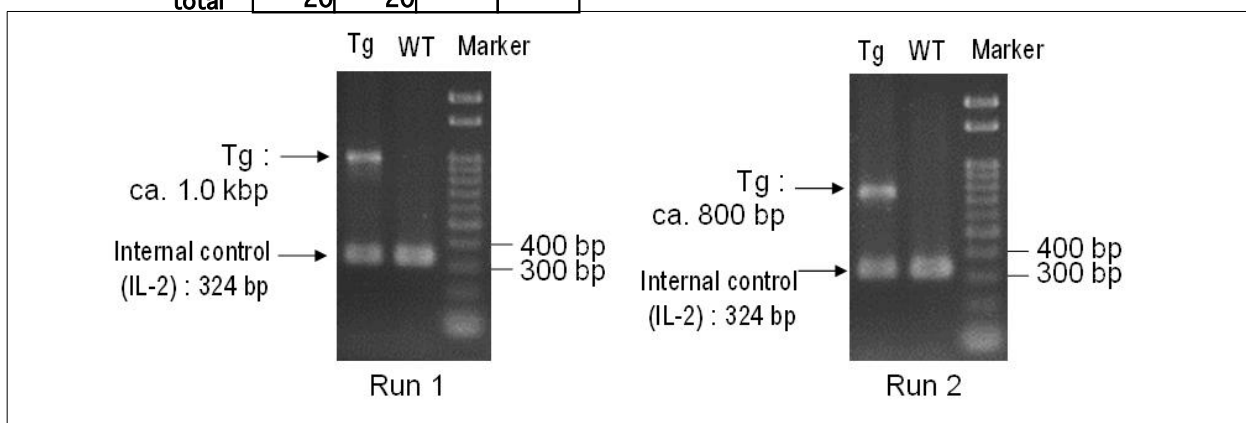
Reaction Components

Enzyme TOYOBO KOD FX (Code.No : KFX-101)

Reaction Conditions

| step | temp (°C) | time (sec) | note |
|------|-----------|------------|-----------------------|
| 1 | 94 | 120 | |
| 2 | 98 | 10* | |
| 3 | 60 | 30* | |
| 4 | 68 | 90* | *Repeat for 30 cycles |
| | | | |
| | | | |
| | | | |
| | | | |
| | | | |
| | | | |
| | | | |
| | | | |
| | | | |

| | Conc | Run 1 | Run 2 | Run 3 | Run 4 |
|------------|------------|-------|-------|-------|-------|
| H2O | | 0.8 | 0.8 | | |
| PCR buffer | 2 X | 10.0 | 10.0 | | |
| dNTP | 2.0 mM | 4.0 | 4.0 | | |
| primer 1 | 10 pmol/μl | 1.0 | 0 | | |
| primer 2 | 10 pmol/μl | 1.0 | 0 | | |
| primer 3 | 10 pmol/μl | 0 | 1.0 | | |
| primer 4 | 10 pmol/μl | 0 | 1.0 | | |
| primer 5 | 10 pmol/μl | 1.0 | 1.0 | | |
| primer 6 | 10 pmol/μl | 1.0 | 1.0 | | |
| DNA | | 1.0 | 1.0 | | |
| Taq | 1 U/μl | 0.2 | 0.2 | | |
| | | | | | |
| | | | | | |
| total | | 20 | 20 | | |



Marker
 Gene Ladder 100 (Wako, Cat. 316-06951)

Gel
 2% agarose in 1 X TAE (100 V, 30 min)

PCR products

| primer_set | product_size | product |
|------------|--------------|--------------------------------|
| primer 1 | primer 2 | ca. 1.0 kbp Tg(CAG-DsRed2) |
| primer 3 | primer 4 | ca. 800 bp Tg(acro-EGFP) |
| primer 5 | primer 6 | 324 bp Internal control (IL-2) |
| | | |
| | | |

Comment Novagen KOD Xtreme™ Hot Start DNA Polymerase can be purchased from EMD.