

RBRC 06323

Strain name B6.Cg-Ednra<tm2Ywa>

Primer	primer_name	primer_seq	length	
1		ACACAACCATGGTGTCTGA	18	Cell Tissue Res., 319, 447-453 (2005).
2		CGGTTCTTATCCATCTCATC	20	Cell Tissue Res., 319, 447-453 (2005).
3		GAGAACCTACAACCTGGGGACACAAACAC	28	Cell Tissue Res., 319, 447-453 (2005).

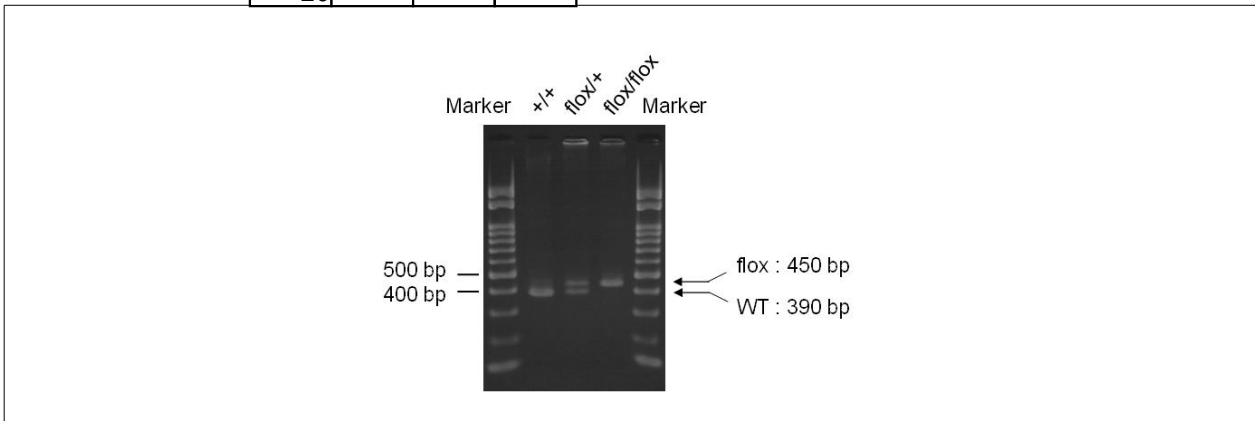
Reaction Components

Enzyme TOYOBO KOD FX (Code.No : KFX-101)

Reaction Conditions

	Conc	Run 1	Run 2	Run 3	Run 4
H2O		1.8			
PCR buffer	2 X	10.0			
dNTP	2.0 mM	4.0			
primer 1	10 pmol/ μ l	1.0			
primer 2	10 pmol/ μ l	1.0			
primer 3	10 pmol/ μ l	1.0			
DNA		1.0			
Taq	1 U/ μ l	0.2			
total		20			

step	temp (°C)	time (sec)	note
1	94	120	
2	98	10*	
3	60	30*	
4	68	120*	*Repeat for 30 cycles



Marker
 Gene Ladder 100 (Wako, Cat. 316-06951)

Gel
 3% Nusieve in 0.5 X TBE (100 V, 50 min)

PCR products	primer_set	product_size	product
primer 1	primer 2	390 bp	WT
primer 1	primer 2	450 bp	flox
primer 1	primer 3	1.3 kb	null (After cre mediated excision)

Comment

RBRC 06323

Strain name B6.Cg-Ednra<tm2Ywa>

Primer	primer_name	primer_seq	length	
1		ACACAACCATGGTGTCTGA	18	Cell Tissue Res., 319, 447-453 (2005).
2		CGGTTCTTATCCATCTCATC	20	Cell Tissue Res., 319, 447-453 (2005).

Reaction Components

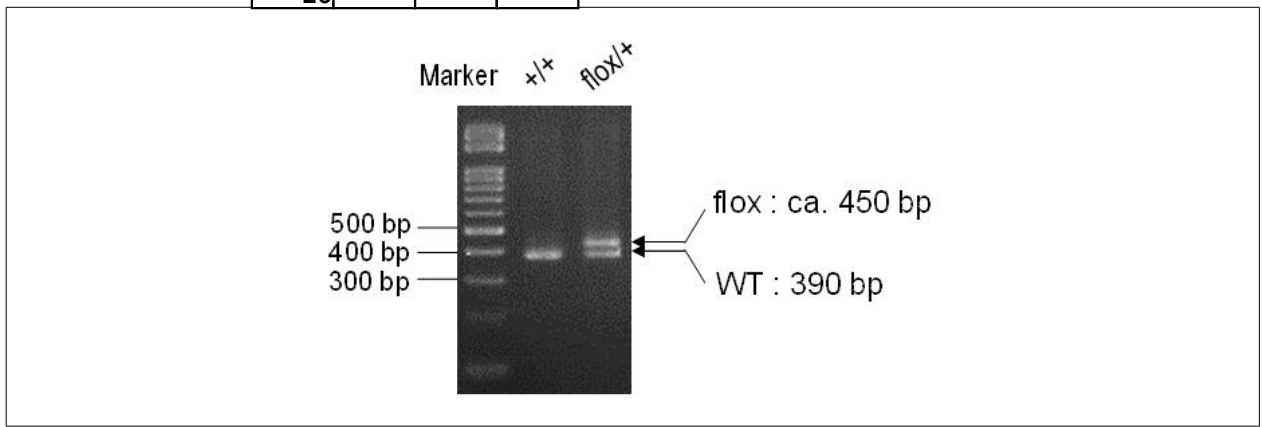
Enzyme TOYOBO KOD FX (Code.No : KFX-101)

Reaction Conditions

	Conc	Run 1	Run 2	Run 3	Run 4
H2O		2.8			
PCR buffer	2 X	10.0			
dNTP	2.0 mM	4.0			
primer 1	10 pmol/ μ l	1.0			
primer 2	10 pmol/ μ l	1.0			
DNA		1.0			
Taq	1 U/ μ l	0.2			
total		20			

step	temp (°C)	time (sec)	note
1	94	120	
2	98	10*	
3	60	30*	
4	68	60*	*Repeat for 30 cycles

Standard PCR



Marker
Gene Ladder 100 (Wako, Cat. 316-06951)

Gel
3% Nusieve in 0.5 X TBE (100 V, 50 min)

PCR products	primer_set	product_size	product
primer 1	primer 2	390 bp	WT
primer 1	primer 2	ca. 450 bp	flox

Comment

Novagen KOD Xtreme™ Hot Start DNA Polymerase can be purchased from EMD.